

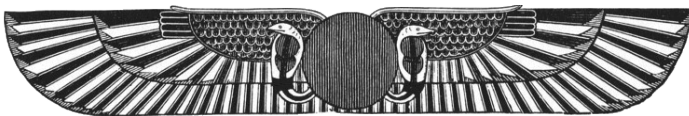
Preface

I want people to be aware of the dangers facing them with the passing of Planet X and the resulting pole shift. I want the reader to have the option of knowing what influence Planet X *will* and *is* having on Earth. This series of newsletters delivers the content with textual detail, images, graphs links to articles and videos. I give a little relief with anecdote and the loveliest images I can find.

Most information is garnered from zetataalk.com and poleshift.ning.com, additionally, I use Nancy Leider's (creator of zetataalk.com) live forum dialogue (via telepathy) with the 4th dimension Zeta aliens for all my crop circle analysis and other real-time information against agencies such as the U.S. Political machines, the Military, NASA and the USGS. The latter source is probably the most important and prized information I can access. Wikipedia and other internet resources provide some detail. Occasionally I will use various websites for general information as well. Cropcircleconnector.com, for example, is also very helpful with crop circle images and diagrams.

Oddly enough, I probably spend more time organizing and gathering images and data, proof reading and *placing the images on the page*, than I do actually writing the Newsletter. I do love it though.

A point that is difficult to explain, is the "contactee" status. It is this "energy" that drives and unites my efforts through Loving energy to educate the reader on this most important subject *ever* in the history of this world, I dare say. Hidden in the process of the pole shift is a transformation of Earth: A sublimation into the 4th dimension. There is more, to tell, but I reveal that in other issues of these NewsLetters.



Introduction

Our Earth is under terrific strain from the nearby Planet X (PX) and very few people know about it. The reason for this, is that NASA has a nasty habit of keeping secrets. When PX was first discovered 28 years ago, it was blurted in the news, then refuted by the U.S. Government a short while afterward and there has been a deep coverup on PX ever since. Now, it's a big problem, because it's sitting on our doorstep: as I write this, it is about 50 million miles out.

Global changes have been blamed on the overproduction of greenhouse gases; the concept of "Global Warming" has been created to misdirect the attention of the public as to the real causes. Don't despair, when you have a chorus of voices constantly singing a tune, it's very easy to start humming it while you are driving or working.

The governmental scientific bodies like the IPCC are very sensitive to public opinion, the recent "climategate" furore will attest to that. The reaction of the climate science management to scrutiny by the public reveals the truth: they are afraid that their collaborative "Global Warming" story will be revealed for what it is. This is a somewhat simplistic view, but basically true. Many scientists are genuine and wish good things to come of their work, unfortunately we live in a very young culture where power and control is held by selfish individuals. This is because the fabric of the Human condition is widely populated by immature souls. From the standpoint of the IPCC, it is a simple matter to use the efforts of the compartmentalized studies of those good scientists, manipulate the results and more importantly their opinions, to serve the bidding of those in control.

But this made up story is unraveling. Steadfastly, the U.S. Government and it's powerful agencies are sticking to their story, but this will blow up in their faces soon enough. Unfortunately, This is not soon enough for you and me.

The pole shift will be coming soon and there will be much wailing and gnashing of teeth, when the general public learns of the coverup and finds out what is really going to happen to their comfortable lifestyles, notwithstanding those people who live in poverty and already are *somewhat* prepared for after-time living.

It's really important for the reader to realize that the Public is always *last to know*, if at *all*. Why is that? What would those corporations and governments do without *you* maintaining your working schedule, producing widgets, so they can continue to live in the style to which they have become accustomed? I don't think they want us to be distracted from that. They want you to keep your "shoulder to the wheel".

It is also important to realize that news corporations are not what they appear to be: they purport to bring the world events and stories to the watching and listening public, but they are also vehicles for governmental and corporate control over the populous. Yes, we have mavericks, but they die, haven't you noticed?

In this document I will cover the essential Planet X, pole shift and aftertime living information in a general principled way. Hopefully some can use these as a guide to provide a Life for yourself, your partner and your children in the New Earth Society.

Throughout, I have sprinkled images of the kind of food you may be eating from the Sea in the aftertime.

Pisaster Ochraceus
(not edible but beautiful)



History and Description of Planet X

Hercolubus by the Incas - 1200 A.D.
 Nibiru by the Sumerians – Mid 6th Millennium B. C.
 Wormwood, Christian Bible - 6th Century B.C.
 At-Tariq, the Quran – 610 A.D.
 The Destroyer, the Kolbrin Bible – Ancient Manuscripts

These are but *some* of the names for PX over the ages. Given the nature of the History of record keeping throughout the world, it is difficult to summarize and collate the writings of such diverse cultures without being an aged lifetime scholar of the History of the World. Still, it doesn't take a great deal of intelligence to come to the conclusion that a planet of influence passed nearby Earth and influenced these cultures during these periods of History. It is also obvious, that when a *name* is given to something that is written into sacred texts and passed down over the ages, that it must have been a pretty important item to those people of that time. We give names to many things in our lives, but do those names last 10,000 years?

Not only is PX obvious in the writings of Humans over the ages, but the irrefutable evidence is found in ice cores and geological records, plus the concept of pole shifts solves mysteries such as ice ages and the disappearance of many advanced civilizations. It answers questions about massive meteor craters and global topology formations over the millennia, the list goes on.

When PX passes, it can create immense upheaval to the surface of the Earth. This catastrophic event consequently throws the civilization du jour back hundreds of years, almost entirely preventing the people of the time from consistently forwarding it's message to it's ascendants in a literal form. Were it not due to the fact, that Pole shifts vary in intensity, I'm sure we would not be able to reconstruct the history of civilization the way we do. Considering the sunken continents of Atlantis and Mu (the kolbrin), I guess modern historians really know very little about Human history after all. The technology that this current 'world culture' has managed to develop, enables us to, at least, confirm the passage of PX by evidence that has been published, but not summarized, collated or extrapolated in a congruent way; this is due to the coverup that is in place maintained by the U.S. Government.

If the Pole Shift we are faced with, was not life threatening, this whole exercise of exposing this particular history of Earth would not be necessary. Therefore it is an opportunity of those who have "connected the dots" to take up the task of communicating this very important message to anyone who will listen.

Baby Clam



The image to the right is an actual Mayan stone carving, it says it all: A powerful being approaches Earth in the glare of the our sun, it has two arms and it is a threat. There are many, many other drawings of PX that have different names written in various different languages, but they all carry a similar message as this stone carving does.



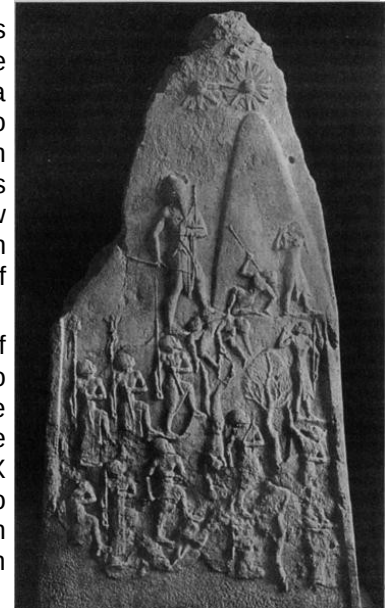
Understand, that almost by definition of the state of our Western culture, there are no photographs of PX. Let me rephrase that: We, as in the general public, do not have a nice close up of PX as NASA does. Today May 19th 2010, we do have photos, but they are grainy and low definition as the backyard hobbyist astronomers do not have satellites and space shuttles to take great pictures of it.

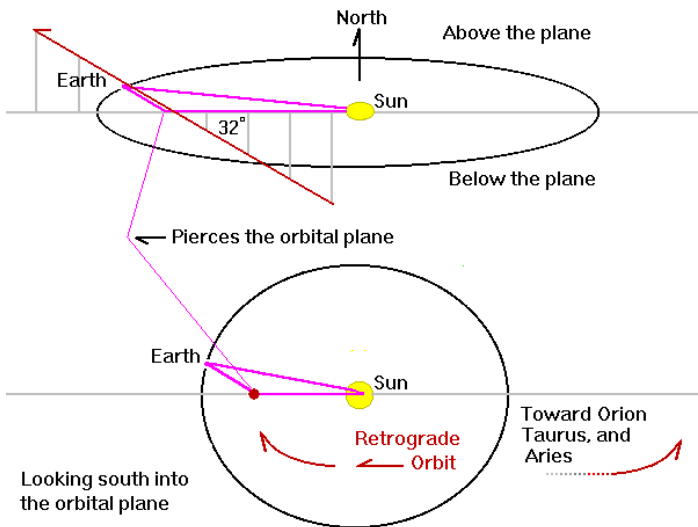
To the right: A Babylonian boundary stone. Notice the winged disk to the left of the sun. Below right, we see an Early Sumerian stone carving that clearly shows two Suns side by side. The date on these stone carvings is considered to be the "Dawn of time".



When PX finally clears the ecliptic, it will have begun to appear to us as a 2nd Sun. This is due to Sunlight bouncing off PX in the direction of Earth: It is now offset enough to allow the sunlight to reach Earth undisguised by the glare of the Sun.

The diagram on the top of the next page provides two explanations. First, is the bottom portion: Here we see the red dot, being PX in it's offset position, also this is the time where Earth has moved to the "left" in it's dithering to avoid PX's





powerful magnet field creating the visibility to PX as a second Sun (seen in background image just below).

The top portion of the dual image, gives the reader a sense of the ecliptic (plane) and the direction of movement PX will have leaving the solar system. Once free of the inward bound particle flows on the ecliptic, PX is clear to be pushed out of the solar system by the Sun's repulsion force.

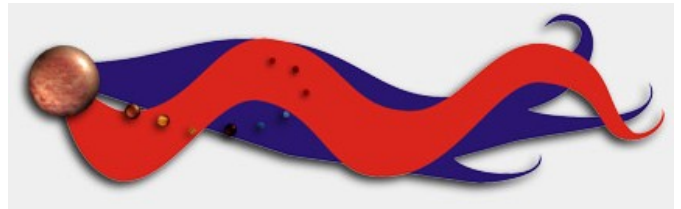
Formed July 4th 2003 in a Wisconsin field, this crop circle (image below) shows 2 basic things:
 1. - The angle of PX in relation to Earth and the Sun at the point of piercing the ecliptic prior to leaving the solar system. Sun, top right, PX middle and Earth bottom left.
 2. - We see 4 different sized circles here, a hint for us to look for when PX appears in the sky during the final months or weeks before the Pole Shift. There is more Zeta analysis, but I'm only including relevant information.

Interesting note: This crop circle was witnessed by a retired truck driver, Mr. Rantala, at 7:40 am in the morning. He happened to notice trees swaying every which way while drinking his coffee. The whole event was witnessed from his workshop window as he leaned out to get a better look. With no UFO visible, one by one, all the circles were created within 15 seconds.

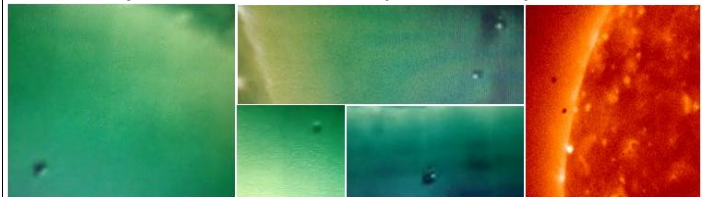


PX is a brown dwarf, 4X the size of Earth and 29X the mass (weight). PX has a soft red glow with two - 5 million long tails of self-orbiting moons of different sizes. Each tail contains about 20 moons. The rest of the tail is debris, suspended petro-chemicals and a massive amount of red iron oxide dust. These tails waft about due to the cosmic wind from the Sun and the interactive magnetic fields of the Earth and Sun. From the standpoint of the onlooker, these tails are also described as 2 horns, however, mostly in ancient times, they are depicted as wings or arms as in the case of the Mayan people.

This simple rendering below, is a side view of PX that gives some perspective of the immense tail:



The composite image below shows the actual moons of PX straying from the tail, but they are still firmly under gravitational influence of PX. They will not strike Earth. These images were taken from the SOHO website where NASA feeds the preprocessed data from the satellite. NASA's response from a questioner about these "orbs" near the Sun was that they were some kind of artifact and not actually there. A lame attempt at coverup.



Many of the images I use are donated by people around the world that contribute their work to zetataalk.com or polshit.ning.com: they catch images like this and many others before removal. Do you think NASA would leave images of PX moons up for long? These acquisitions require time and vigilance. From a NASA perspective, these are a liability to their survival as an organization. According to the Zetas (upcoming subject in this informational), NASA will be completely discredited in the last weeks or month(s) prior to the pole shift anyways.



Laver (Seaweed)



Blue Mussels

Information Source: Zetatalk.com

This next subject requires the reader to stretch thinking, beliefs, expectations and imagination possibly allowing an end-run around personal opinions. If the reader has a problem with this concept, I suggest just reading and absorbing the core pole-shift information.

The Zeta Aliens are from a not visible 4th dimension part of Zeta Reticuli, (39 light years away) and have been telepathically communicating this subject with Nancy Leider (creator of zetatalk.com) since 1995. Zetatalk.com is a massive site, but not sophisticated in look as the many internet sites we see today. This is because Nancy Leider's motive is not about making money from zetatalk.com, but to get the message out about the coming Pole Shift caused by Planet X.

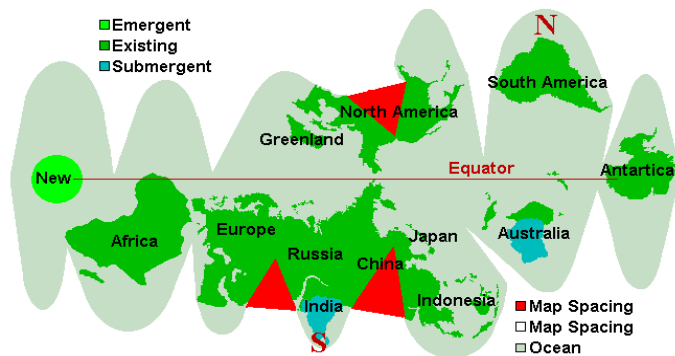
The message given by the Zetas is intelligent, integrated and expansive, far and beyond that of Human ability. Except for the jaded, negative or those in active denial, it becomes clear for anyone to see the real value, as time is invested to read. We are talking 4,000 pages of detailed information: that figure was for several years ago, it has grown since. This is the reason I started the Planet X Newsletter: A compendium of the prolific Zetatalk message.



Essential Pole shift

Once Planet X clears the ecliptic or orbital plane (image top of previous page), it will finally approach and pass by Earth within a "magnet trimester", which is a cyclic period of 4 months. Throughout that time, in order of sequence but not back-to-back, we will experience: First a severe wobble, then a lean to the left, 3 days of darkness, 6 days of sunrise west, some weeks of rotation slowing, a week of rotation stoppage and finally the Pole Shift.

The actual pole shift occurs because the crust of Earth is virtually separated and spun almost 90° (in this case) so that the tip of India will be the new South Pole and the North Pole will be just off the Bulge of Brazil.



The rolling Earth is caused by the North Pole of PX pushing on Earth's North pole as PX passes overhead. We will not feel the Earth roll, but will experience the results as global Richter 9 earthquakes, very high winds, 500 to 600 foot tsunami/tides when it comes to a stop. The main event, the Pole Shift, takes place within an hour.

Taken from the Zetatalk writings: that there does exist a constant resistance between Earth's crust and the magma core (the core rotates just ahead of the crust) and that PX does have a lock on Earth's crust (rotation stoppage time) because of the magnetics involved against the Mid-Atlantic Ridge (explained below), this is a fact. Crust separation occurs during the actual hours/minutes prior to rotation stoppage: vibrating, jerking and groaning. This is because the heavy core resists by momentum, tearing then separating, and thus freeing the crust for additional movement: As PX passes by overhead, the resulting magnetic influence (push) permanently repositions Earth's poles with a new topography.

What enables the "lock" of PX on the Earth is the Mid-Atlantic Rift or ridge. This is an almost Pole to Pole mountain range of hardened iron-heavy magma from Iceland to just North of the continent of Antarctica. Bottom, you can see by the illustration that this mountain range is massive. We call the Mid-Atlantic Ridge: Earth's 3rd magnet. For several years, this has been causing "earth wobble": the

north pole tilting away from the sun and returning, an increased tilt of the Earth as the Atlantic approaches high noon (faces the Sun) Each day. The Earth wobble is well documented and remember you won't feel it, but we do



experience the effects: The Weather records being broken around the world. Yes, this is now being repressed by the U.S. Government.



The Pacific Salmon

Poleshift-time dangers

The two tails of PX are 5 million miles long and waft about like a flag in a wind that periodically changes direction. We are safe from the moons, don't worry about those, they will clear Earth by millions of miles, but it's the debris *in* the tails that is the problem. Writings of old (from several different civilizations) tell of fire from the sky and raining stones and fireballs. Having studied the Zeta works, and using common sense, it's clear to me now that it is PX tail junk. For eons, PX has been passing through the asteroid belt accumulating massive amounts of just plain bits and pieces of smashed moons and asteroid gravel. Not to be out-done, however, is a dominant quantity of red iron oxide dust, and, surprizingly, but not really: petro-chemicals. I never really could get my head around what we were told in school about oil deposits being an accumulation of dead trees and animals, just didn't make sense to me. Now we know where all the oil comes from.

During, and potentially weeks and months before the pole shift, we will experience red dust fall: look for that as a flag to relocate to a safe location. Increasing meteor activity/fireballs hitting the Earth fast on the rise. Animals will also be unpredictable, so watch for that. Firestorms are also possible due to igniting petrochemicals falling to Earth. Bear in mind that the severity of all this depends on many factors that can't be predicted. My guess is that if you are Sun side (remember, rotation stoppage, so some countries will be in daylight for 6 days straight) to prepare for the worst. If you study the Mid-Atlantic Rift map, you can make a good guess as to where you will be in relation to the Sun, as the Earth will lock with the mid Atlantic facing the Sun, which will put PX overhead.

To survive all this, it is suggested that you dig a habitation trench, and place a strong roof over it. If you are caught somehow in transit, being in the lee of wind against a rock wall or steep cliff is suggested. Of course, it is best to have a secure place of refuge that is stocked with food, water and blankets *before hand*. There is a high likelihood of very Heavy booming from stratospheric lightening, so some kind of ear protection is likely to be needed as well. It is reported in the Kolbrin, from past pole shifts, that people had lost their hearing for a few days after the PS.

In my existing and future NewsLetters I cover many things suggested for PS preparation and survival needs.

Essential After-Time

I think it is very important to understand the implications of a global cataclysm of this unimaginable scale. Life goes on, as it always has, but conditions will have drastically changed. Working together as a community will be paramount, certainly for the young, the elderly, the sick and the injured; but everyone can play a part in reconstituting a

new life.

The area that you live in will have new weather patterns: my NewsLetter Issue #4 covers how to roughly plan for this. If you live near the ocean or river flats, you have to relocate 205 meters above sea level to avoid being flooded out. During the pole shift, anyone on or near the coast has to take precautions against 600 to 700 foot tides, it is after this, ironically, that the sea level will eventually rise to a similar height due to melting old poles and the heat-swelled Earth from the stress of the PS.

Before pole shift-get up out the way of the surging water.

Within 2 years after-rising sea level to 675 feet.

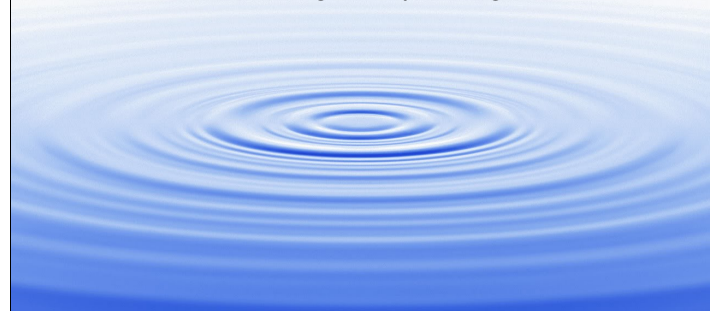
20 years or more-sea level falls back as new poles form.

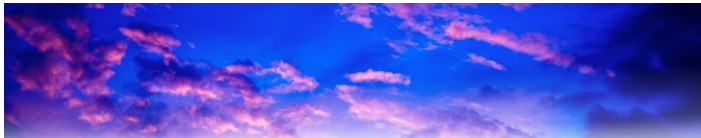
If you live near a volcano, relocation is also necessary to at least 200 miles away. Consult Issue #4 for more details on this.

You, of course, have stocked food, tools, seed and equipment for industry, farming, food gathering and fishing meanwhile, until the volcanic gloom diminishes enough for growing food. The Zetas say up to 25 years in some areas will experience the gloom. However, if you plan well, you won't have to put up with living near an active volcano belching ash for this long. Many volcanoes will become active, as *they are now*, the Zetas say any volcano active within the last 10,000 years will erupt to *some* extent.

Being a global catastrophic event, the PS will break dams and topple electrical transmission towers disabling the distribution of electricity. Also, PX is a massive magnetic giant, it causes EMP (Electrical-Magnetic Pulse) and will disable all satellites (it already has affected some, but NASA disguises this as some kind of system failure), this means no global telecommunications. As international telecommunications and internet is also conducted through cables laid on the ocean floor, they will also be severed (this has already happened in various places around the world). Indeed, as clean distributed water is also dependent on stable ground, this too is permanently interrupted worldwide. All this sets Human civilization back 200 years.

The Zetas say that 90% of the world's population will die during the PS and more afterward due to starvation, injury and illness. Planning for survival, stocking food, tools and equipment is the simple cure. Most of those lost will only be due to lack of knowledge and planning.





This NewsLetter series has the distinction of being the only one of it's kind, so is limited in reach to the public. The Zeta message is not the *event* per say, it is the *portending*, all be it highly accurate. The Zetas say that some aspects of the pole shift are subject to dynamic forces at the time, and therefore are not predictable. However, be assured the pole shift will not go away by holding hands and chanting ohm – It is *coming*.

In my opinion, it is best to begin preparing as soon as possible for three reasons. 1. - The obvious, being that you and your loved ones have a stable plan for safety and survival. 2. - This enables you to be mentally and emotionally available during the cataclysm, which will be needed by those under your care. 3. - You now have the option of spreading the word to help others become aware of Planet X and the pole shift as well.

My newsletters are available to help those interested to know what to watch for in the last months and weeks, this is covered, though if you want to wade through www.zetatalk.com and find the answers for yourself, you can: use the search function on the top of the home page.

The Zetas say that the public at large *will* be aware that something is drastically wrong in the final magnetic trimester, so many people will be clamoring for answers and needs as well at that time. Indeed, there will be frightened and crazed individuals roaming about: a dangerous environment. While we feel for those people who are caught unawares, it doesn't preclude you from readying yourself and your family does it?

Once you have done the homework on Planet X and/or you have made the leap of consciousness to include it's reality, you will be energized on this matter: The preparation for survival and even looking forward to after-time living. The crazy record-setting weather, the sky-swirls, the earthquakes, the volcanoes, the sink holes, the malfunctioning communications all take on an amazing chorus, an Earthly music marching us towards the big event. You will welcome it: that it is over and begun at the same time, but also a great opportunity to serve your fellow man.



Odds and Ends

Below is an excellent picture of Planet X from the SOHO website. May 26th 2010. In my personal opinion, this is the way PX will appear most likely all this year as it is moving very slowly in a more or less 32° angle upwards: North to South.



About the author: I am a Zeta Contactee since 2007 and have been following Zetatalk.com since. I live in Victoria B.C. Canada I have 5 offspring with 4 grandchildren. Communicating the Zetatalk message has become very important to me for this reason. The first I realized the Zeta message was genuine, I began to think about how to survive it with my family and inform others. I ask my own questions and I find my own answers.

Watch the sky, the Sun and the Moon. Observe Earth change events as reported by either T.V. or internet, but take the reported story with a grain of salt. Earth events alone tell the story, the news corporations try to spin what you see. Just see.

